

Stainless Steel Enclosures



Single Door with Quarter Turn

Order
Panel
Separately



Application

- Designed to enclose electrical and/or electronic equipment and protect against harsh, industrial environments for wallmount applications.
- Impressive styling features like hidden hinges and attractive latching systems make the Eclipse a suitable addition to any high-tech equipment installation.
- A wide range of sizes and practical accessories make this product line a complete package.
- For high temperature applications, a gasket retainer may be required, please refer to factory.

Standards

- UL 508 Type 3R, 4, 4X and 12
- CSA Type 3R, 4, 4X and 12
- **Complies with**
 - NEMA 3R, 4, 4X, 12 and 13
 - IEC 529, IP 66

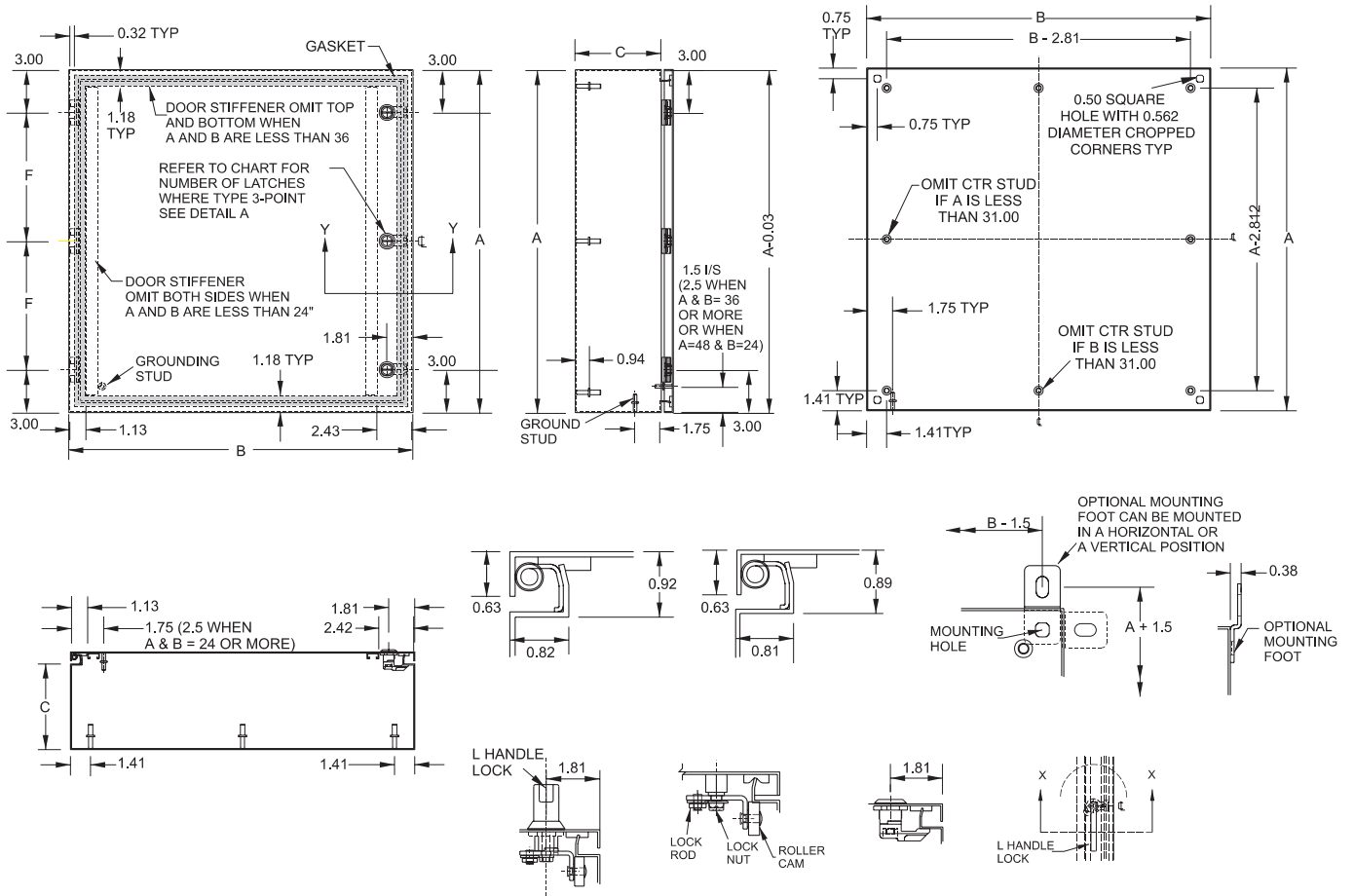
Construction

- Formed 304 stainless steel.
- Continuously welded seams ground smooth.
- Door stiffeners are provided where required for increased strength and rigidity - designed to also permit additional mounting options.
- Formed lip on enclosure to exclude flowing liquids and contaminants.
- Door latches feature the added safety of quarter turn slot requiring use of tool for opening.
- Doors may be easily removed for modifications and are interchangeable.
- Oil resistant gaskets are permanently secured and can easily be replaced in the field if necessary.
- Collar studs provided for mounting inner panel.
- Includes hardware kit with panel mounting nuts and sealing washers for wall mounting holes.
- Bonding stud provided on door and grounding stud installed in enclosure.
- Hinges are 304 stainless, 3 point latching handle (where applicable) is zinc diecast with black epoxy finish.
- Stainless steel hinge pins and quarter turns.

Finish

- Cover and enclosure are natural stainless steel with a smooth brushed finish.

DIMENSION DRAWINGS FOR STAINLESS STEEL ENCLOSURES



Type	DIMENSION			Door Guage	Latches		Panel Size		# Hinges	F	Ship Wt. Lbs.
	A	B	C		Qty	Type	D	E			
20x20x8	20	20	8	16	1	Qtr. Turn	18.2	18.2	2	14	28
24x24x12	24	24	12	14	2	Qtr. Turn	22.2	22.2	2	18	47